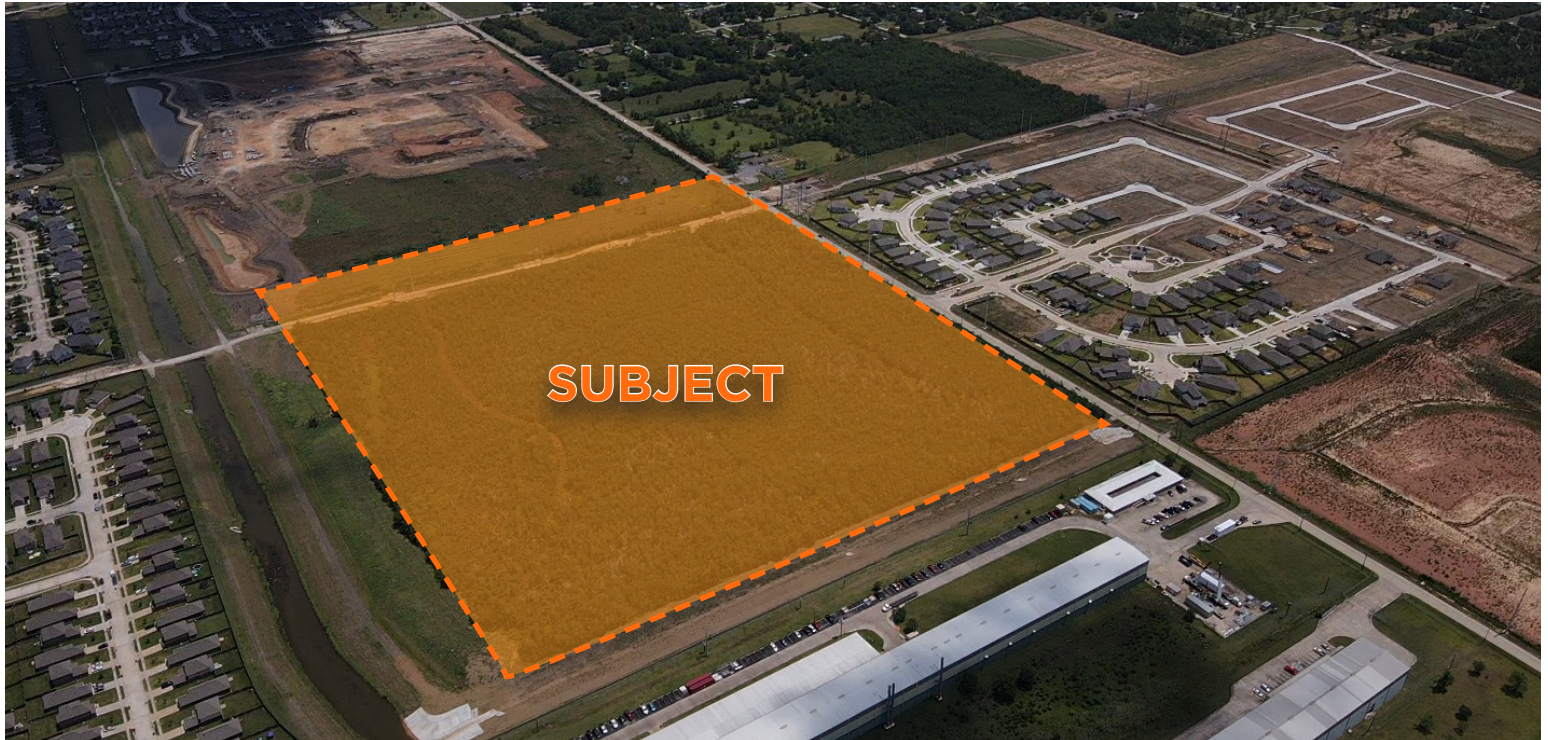


FOR SALE DEVELOPMENT OPPORTUNITY

312 DELANY ROAD | LA MARQUE, TX 77568



PROPERTY FEATURES:

Address: 312 Delany Road
La Marque, TX 77568

Investment Type: Commercial, Multi-Family,
Residential or Hold for Future
Development.

Land Area: **±51.01 ACRES TOTAL**
(Provided by GCAD)
±2,221,995.60 SF
±48.37 Acres
(Net Useable Acreage)
±2,102,997.20 SF
±47.45 Acres Total
(According to Survey
provided by Seller)
±2,066,922 SF

Asking Price: Call Broker for Pricing

SUBJECT PROPERTY:

- **Frontage:** 1,413.12'
- **Usage:** Commercial, Multi-Family, Residential or Hold for Future Development.
- **Utilities:** M.U.D Available - Galveston County
- **Located** in 500 Year Floodplain (see map provided)
- **High Growth** Area & Ongoing Major Residential Developments.
- **Electrical Easement:** Located on the Northern Border of the Tract of Land. (±2.73 Acres absorbed from Electrical Easement)



BRANDON WUNTCH

D / 713.275.3784
M / 713.882.1739

bwuntch@fritscheanderson.com

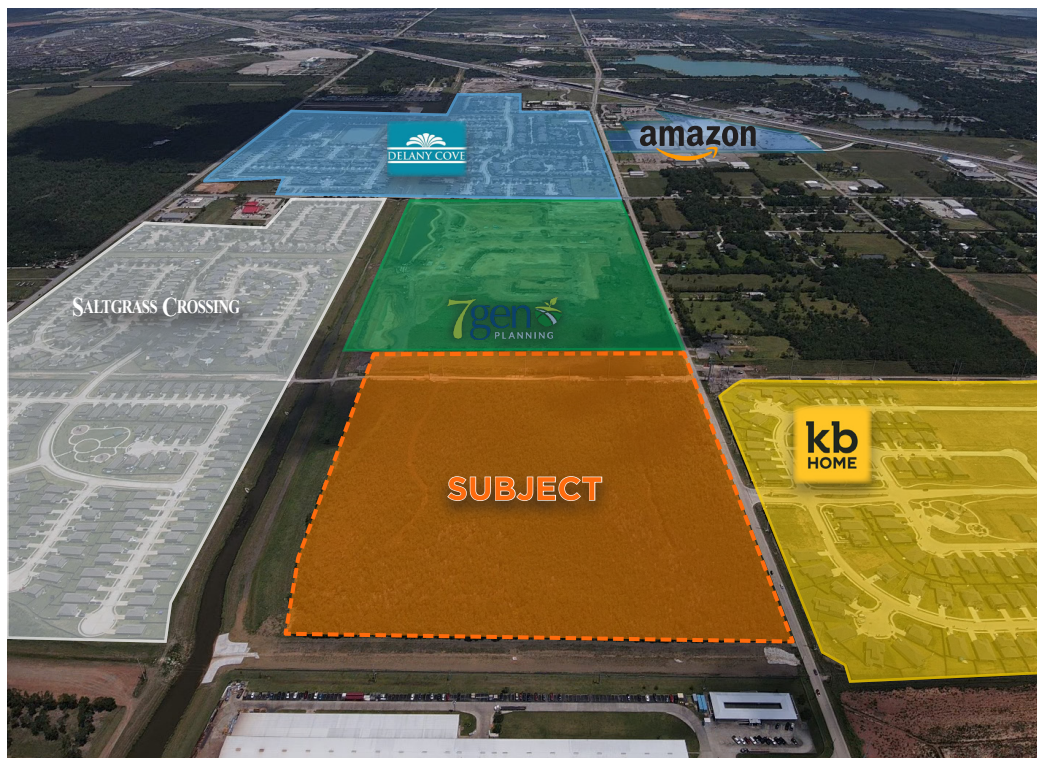
DREW ALTMANN

D / 713.275.3815
M / 713.828.9491

daltmann@fritscheanderson.com

FOR SALE DEVELOPMENT OPPORTUNITY

312 DELANY ROAD | LA MARQUE, TX 77568



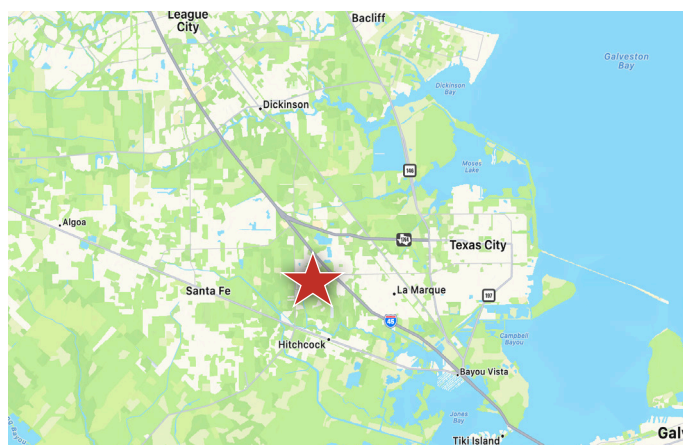
DEVELOPER	DEVELOPMENT
Lennar Homes	Delany Cove
KB Homes	Sunset Grove
7 Gen Planning	Trails at Woodhaven Lakes

Within Close Proximity to Neighboring Cities:

- Hitchcock, TX
- Santa Fe, TX
- Bayou Vista, TX
- Texas City, TX
- Galveston, TX
- Kemah, TX
- Dickinson, TX

Proximity to Large Businesses Attractions and Major Thoroughfares:

- 0.88 Miles from the New Amazon Delivery Station (DHT1)
- 1.08 Miles from FM 2004
- 1.18 Miles from Highway 6
- 1.33 Miles from Interstate 45 (I-45)
- 2.09 Acres from Emmett Lowry Express Way (FM 1764)
- 4.75 Miles from Tanger Outlets Houston



BRANDON WUNTCH

D / 713.275.3784
M / 713.882.1739

bwuntch@fritscheanderson.com

DREW ALTMANN

D / 713.275.3815
M / 713.828.9491

daltmann@fritscheanderson.com