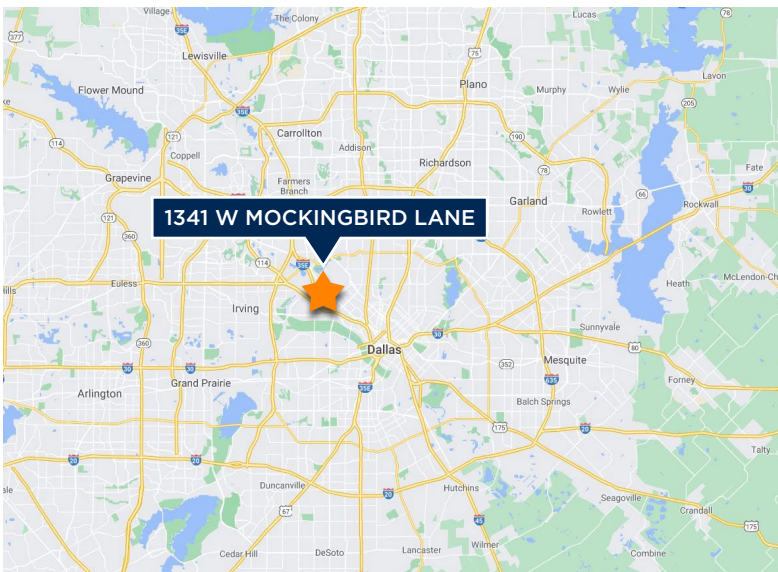


FOR SUBLEASE MOCKINGBIRD TOWERS 1341 W MOCKINGBIRD LN / DALLAS, TX 75246

CENTRAL DALLAS SUBLEASE OPPORTUNITY

1341 W MOCKINGBIRD LANE | SUITE 104 E | 1,840 SF



SUBLEASE DETAILS:

Building Address: 1341 W Mockingbird Ln

Suite: 104 E

RSF: 1,840 SF

Term Expiration: 7/31/2023

Year 1 Rate: Negotiable

Parking: 3.30/1,000 SF



MIKE QUINN

D / 713.275.3807

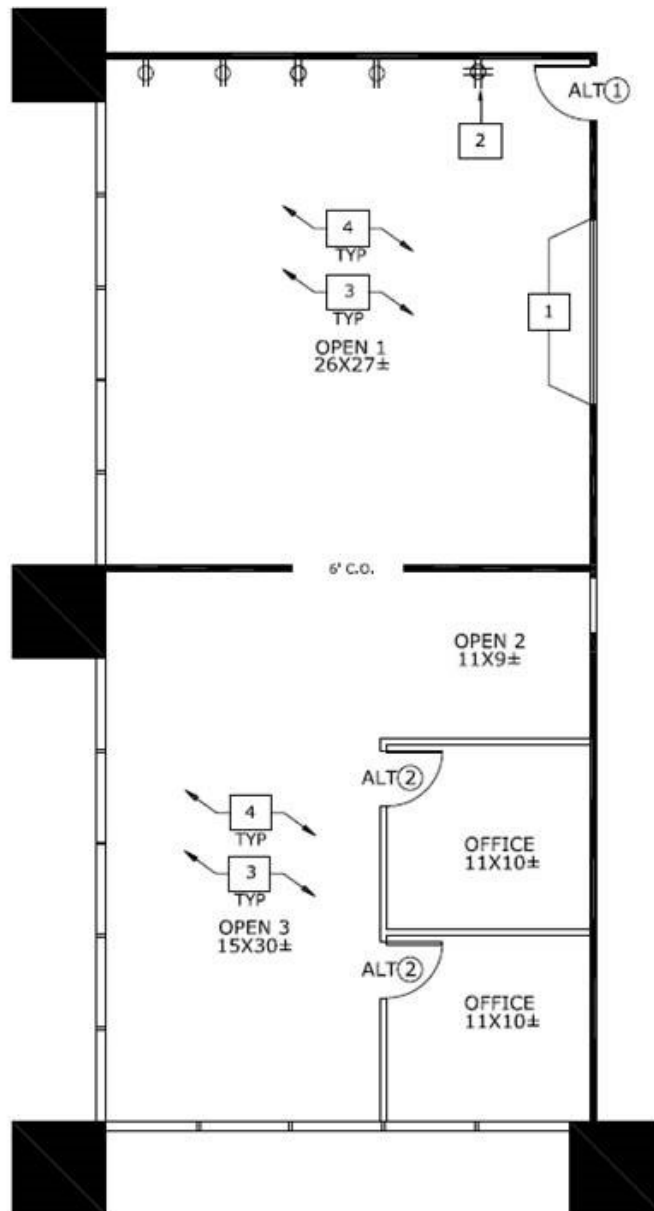
M / 713.252.9623

mquinn@fritscheanderson.com

FOR SUBLEASE MOCKINGBIRD TOWERS 1341 W MOCKINGBIRD LN / DALLAS, TX 75246

CURRENT FLOOR PLAN

1341 W MOCKINGBIRD LANE | SUITE 104 E | 1,840 SF



MIKE QUINN

D / 713.275.3807

M / 713.252.9623

mquinn@fritscheanderson.com