

# FOR SALE OR LEASE ENERGY CORRIDOR

## 16920 PARK ROW | HOUSTON, TX 77084



### PROPERTY DETAILS:

<b>Building Address:</b>	16920 Park Row
<b>Year Built / Renovated:</b>	1972 / 2014
<b>Availability:</b>	Immediate
<b>Land Area:</b>	1.303 AC (56,759 SF)
<b>Building Size:</b>	5,304 RSF
<b>Fenced:</b>	Yes
<b>Parking:</b>	Paved capacity for 60 surface spaces
<b>Furniture:</b>	Available, Negotiable
<b>Asking Price:</b>	\$1,475,000
<b>Asking Rent:</b>	Contact Broker

### PROPERTY HIGHLIGHTS:

- Rare single-tenant campus opportunity in Park Ten
- Did not flood during Hurricane Harvey
- Recently renovated with above standard office finishes
- Perimeter fencing and access gates
- High exposure monument sign on Park Row Blvd
- Large site can accommodate significant building expansion



#### JASON HERBRICH

D / 713.275.3806  
M / 713.885.8462  
jherbrich@fritscheanderson.com

#### ANTHONY FRITSCHE

D / 713.275.3801  
M / 832.515.7366  
afritsche@fritscheanderson.com

**FOR SALE OR LEASE** ENERGY CORRIDOR  
16920 PARK ROW | HOUSTON, TX 77084

## SINGLE TENANT ENERGY CORRIDOR CAMPUS

16920 PARK ROW / 1.303 AC / 5,304 RSF



## VIRTUAL TOUR

CLICK TO VIRTUALLY TOUR THIS SPACE



**JASON HERBRICH**

D / 713.275.3806  
M / 713.885.8462  
jherbrich@fritscheanderson.com

**ANTHONY FRITSCHE**

D / 713.275.3801  
M / 832.515.7366  
afritsche@fritscheanderson.com

# FOR SALE OR LEASE ENERGY CORRIDOR

## 16920 PARK ROW | HOUSTON, TX 77084



**JASON HERBRICH**

D / 713.275.3806  
M / 713.885.8462  
jherbrich@fritscheanderson.com

**ANTHONY FRITSCHÉ**

D / 713.275.3801  
M / 832.515.7366  
afritsche@fritscheanderson.com

# FOR SALE OR LEASE ENERGY CORRIDOR

## 16920 PARK ROW | HOUSTON, TX 77084



**JASON HERBRICH**

D / 713.275.3806

M / 713.885.8462

[jherbrich@fritscheanderson.com](mailto:jherbrich@fritscheanderson.com)

**ANTHONY FRITSCHÉ**

D / 713.275.3801

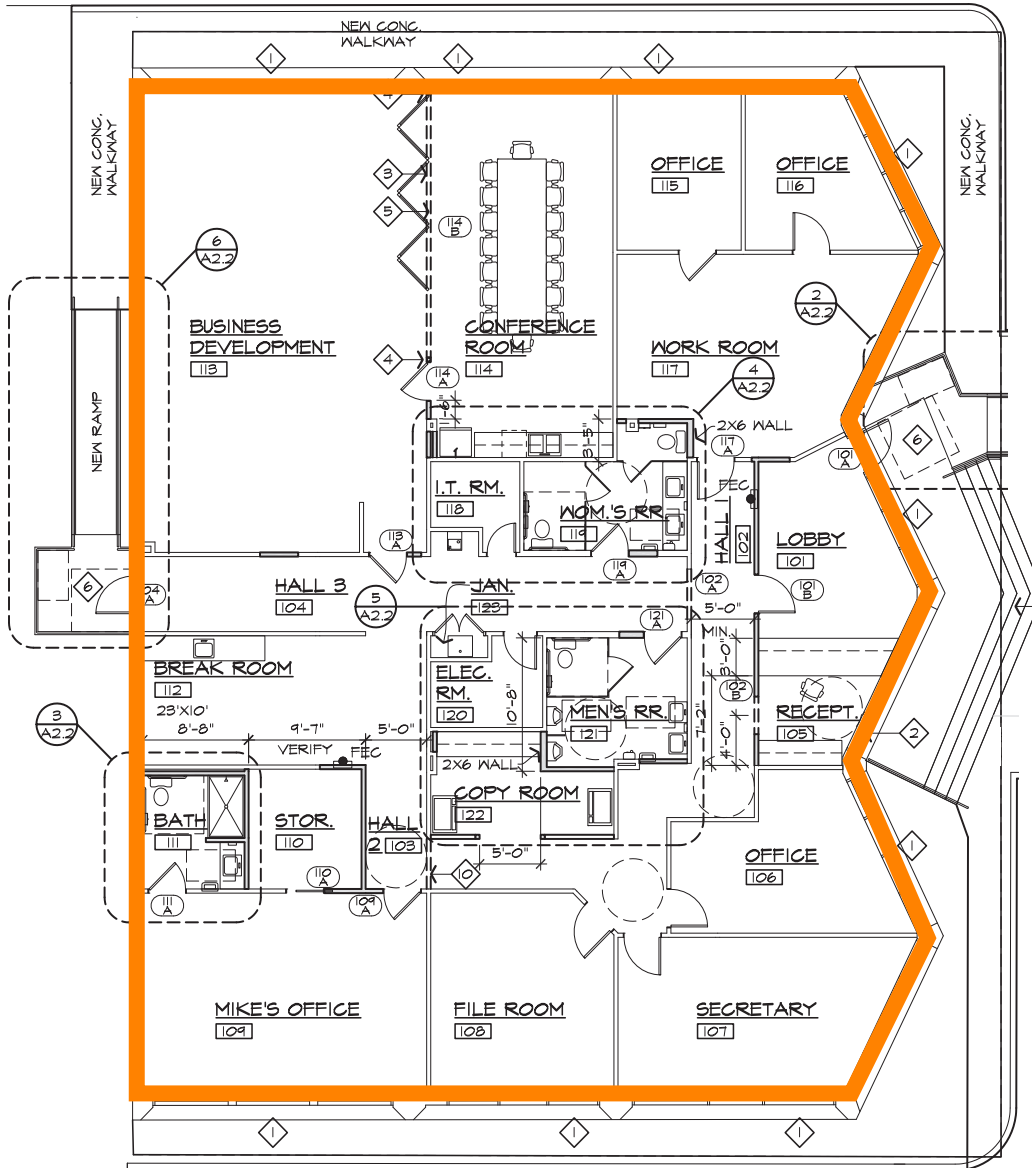
M / 832.515.7366

[afritsche@fritscheanderson.com](mailto:afritsche@fritscheanderson.com)

# FOR SALE OR LEASE ENERGY CORRIDOR

## 16920 PARK ROW | HOUSTON, TX 77084

ADDITIONAL PARKING / YARD



PARK ROW

5,304 RSF



**JASON HERBRICH**

D / 713.275.3806  
 M / 713.885.8462  
 jherbrich@fritscheanderson.com

**ANTHONY FRITSCHÉ**

D / 713.275.3801  
 M / 832.515.7366  
 afritsche@fritscheanderson.com