

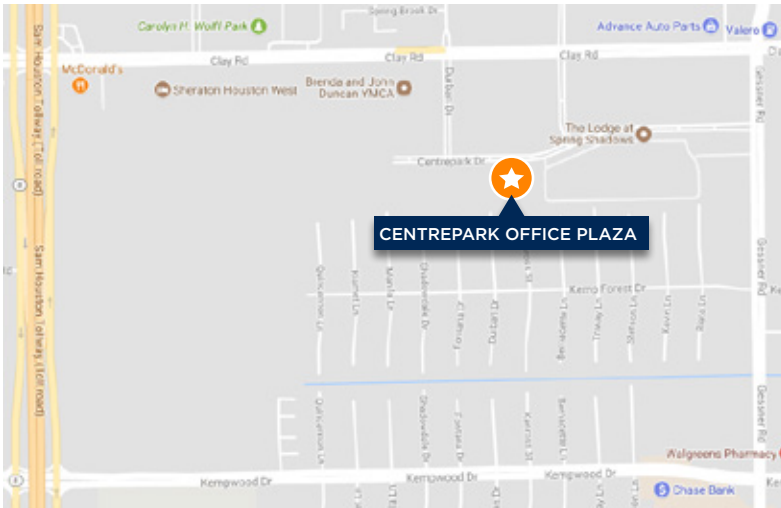


**FRITSCHÉ ANDERSON  
REALTY PARTNERS**



## OFFICE SPACE FOR LEASE

10355 CENTREPARK DR. / HOUSTON, TEXAS 77043



<b>Building Address:</b>	10355 Centrepark Dr.
<b>Availability:</b>	April 1, 2018
<b>Available Space:</b>	7,362 RSF   1 <sup>st</sup> Floor 2,976 RSF   2 <sup>nd</sup> Floor
<b>Quoted Year 1 Rate:</b>	\$19.50 PSF/MG.
<b>Term:</b>	3-5 Years
<b>Parking:</b>	Surface Parking

**Features:**

- Building facade is an EIFS and stone veneer
- Decorative roof towers
- Reflective, bronze insulated glass windows and doors
- Metal frame
- Bay depths of 50 & 55 ft
- Three double door front entrances per floor and three single rear doorways on level 1
- Two stairways and one (1) elevator

**FOR MORE INFORMATION, PLEASE CONTACT:**

**WARREN ALEXANDER**

D / 713.275.3813  
M / 713.304.2825

walexander@fritscheanderson.com

**TOMMY ALEXANDER**

D / 713.275.3812  
M / 713.569.0256

talexander@fritscheanderson.com

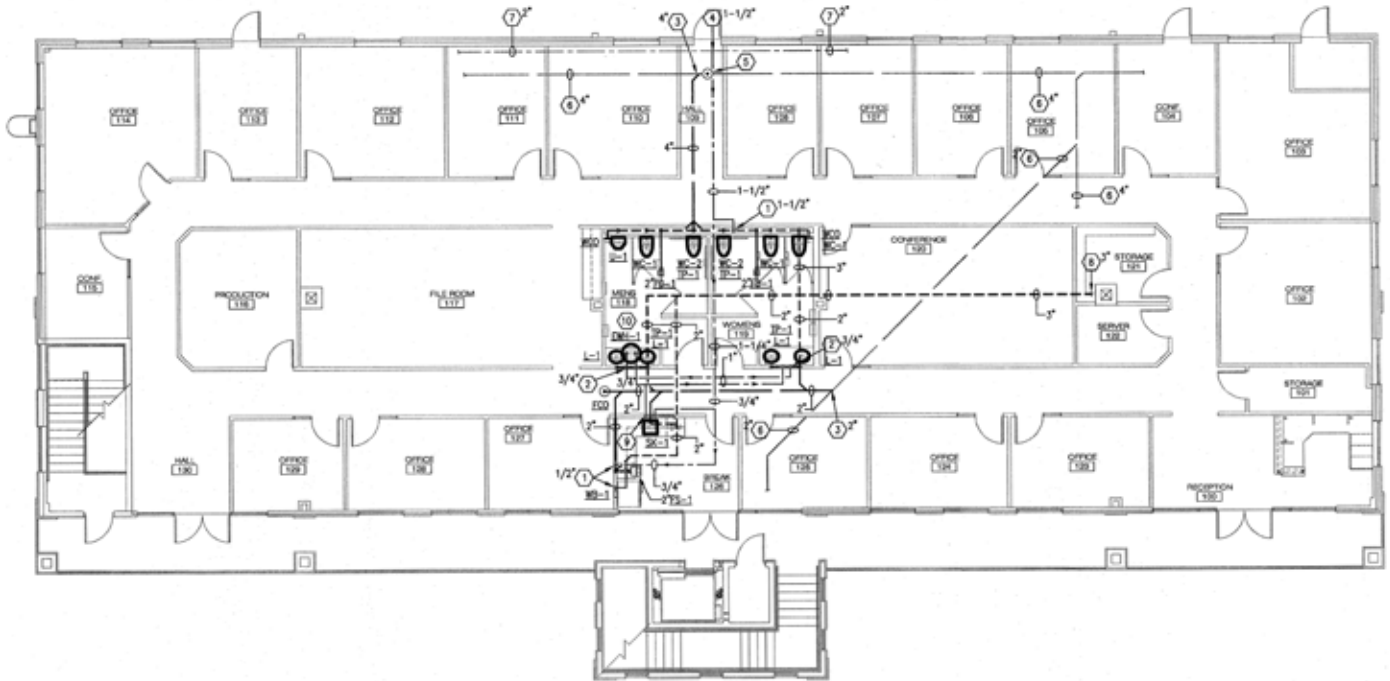


FRITSCHÉ ANDERSON  
REALTY PARTNERS

## OFFICE SPACE FOR LEASE

10355 CENTREPARK DR. / HOUSTON, TEXAS 77043 / FIRST FLOOR

7,362 RSF



**FOR MORE INFORMATION, PLEASE CONTACT:**

**WARREN ALEXANDER**

D / 713.275.3813

M / 713.304.2825

walexander@fritscheanderson.com

**TOMMY ALEXANDER**

D / 713.275.3812

M / 713.569.0256

talexander@fritscheanderson.com

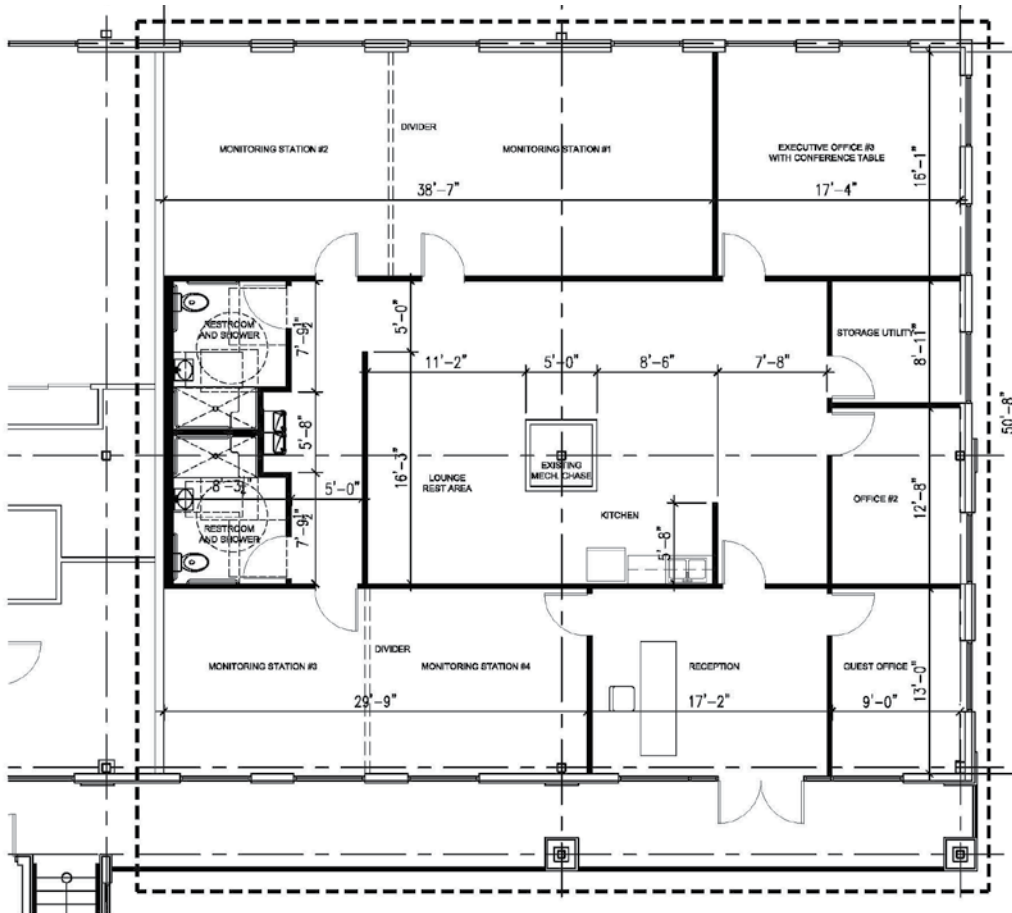


**FRITSCHE ANDERSON**  
REALTY PARTNERS

# OFFICE SPACE FOR LEASE

10355 CENTREPARK DR. / HOUSTON, TEXAS 77043 / SECOND FLOOR

2,976 RSF



**FOR MORE INFORMATION, PLEASE CONTACT:**

**WARREN ALEXANDER**

D / 713.275.3813  
M / 713.304.2825

walexander@fritscheanderson.com

**TOMMY ALEXANDER**

D / 713.275.3812  
M / 713.569.0256

talexander@fritscheanderson.com